

Trumpet 1

CLAMOUR BANGER

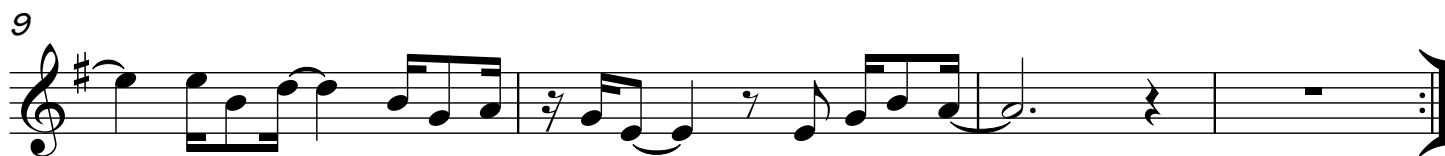
♩=108

open intro

4



A  trumpet melody

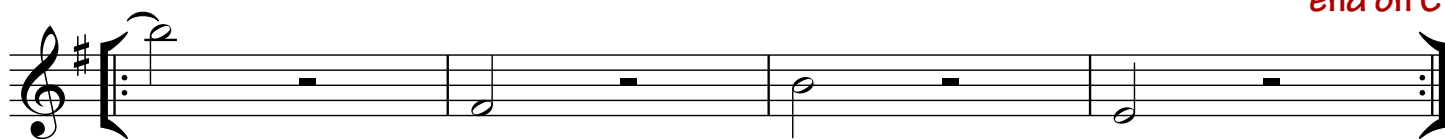


B montuno



C chords

Solos, then DS
end on C



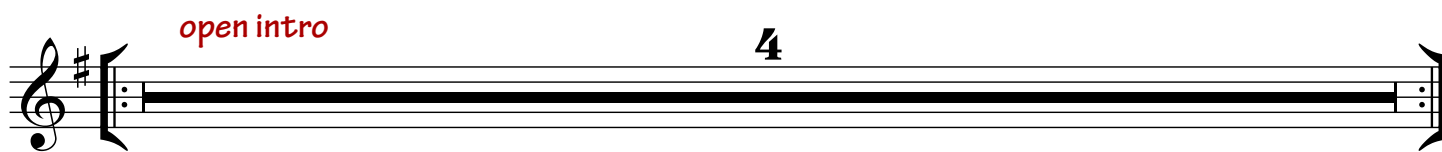
Trumpet 2

CLAMOUR BANGER

♩=108

open intro

4



A trumpet melody



9

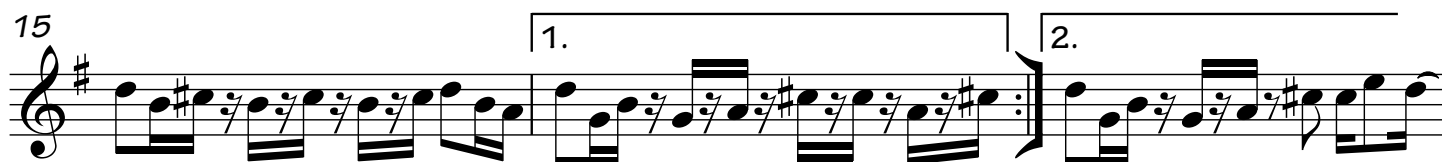


B montuno



15

1. 2.



C chords

Solos, then DS
end on C



Tenor Saxophone

CLAMOUR BANGER

♩=108

open intro

A  trumpet melody

9

B montuno

15

C chords

Solos, then DS
end on C

Trombone 1

CLAMOUR BANGER

♩=108

open intro

Musical notation for the open intro section, starting with a double bar line and repeat sign. The melody consists of eighth notes and rests, ending with a double bar line and a '2' above it, indicating a second ending.

A  trumpet melody

Musical notation for the trumpet melody section, starting with a double bar line and repeat sign. The melody consists of eighth notes and rests, ending with a double bar line.

9

Musical notation for a section with a measure rest, starting with a double bar line and repeat sign. The rest is labeled with a '4' above it, indicating a four-measure rest. The section ends with a double bar line.

B montuno

Musical notation for the montuno section, starting with a double bar line and repeat sign. The melody consists of eighth notes and rests, ending with a double bar line and a '2' above it, indicating a second ending. The first ending is labeled '1.' and the second ending is labeled '2.'.

C chords

Solos, then DS
end on C

Musical notation for the chords section, starting with a double bar line and repeat sign. The chords are represented by whole notes, ending with a double bar line.

CLAMOUR BANGER

Trombone 2

♩=108

open intro

Musical staff for Trombone 2, open intro section. The staff is in bass clef with a key signature of one flat (Bb). It contains three measures of music. The first measure has a quarter note G2, a quarter note F2, and a quarter rest. The second measure has a quarter rest, a quarter note G2, a quarter note F2, and a quarter rest. The third measure has a quarter rest, a quarter note G2, a quarter note F2, and a quarter rest. A double bar line with a repeat sign is at the end of the staff, with a '2' above it.

A trumpet melody

Musical staff for Trombone 2, trumpet melody section. The staff is in bass clef with a key signature of one flat (Bb). It contains five measures of music. The first measure has a quarter note G2, a quarter note F2, and a quarter rest. The second measure has a quarter rest, a quarter note G2, a quarter note F2, and a quarter rest. The third measure has a quarter rest, a quarter note G2, a quarter note F2, and a quarter rest. The fourth measure has a quarter rest, a quarter note G2, a quarter note F2, and a quarter rest. The fifth measure has a quarter rest, a quarter note G2, a quarter note F2, and a quarter rest. A double bar line with a repeat sign is at the end of the staff.

Musical staff for Trombone 2, measure 9. The staff is in bass clef with a key signature of one flat (Bb). It contains one measure of music. The measure has a quarter rest, a quarter note G2, a quarter note F2, and a quarter rest. A double bar line with a repeat sign is at the end of the staff, with a '4' above it.

B montuno

Musical staff for Trombone 2, montuno section. The staff is in bass clef with a key signature of one flat (Bb). It contains five measures of music. The first measure has a quarter note G2, a quarter note F2, and a quarter rest. The second measure has a quarter rest, a quarter note G2, a quarter note F2, and a quarter rest. The third measure has a quarter rest, a quarter note G2, a quarter note F2, and a quarter rest. The fourth measure has a quarter rest, a quarter note G2, a quarter note F2, and a quarter rest. The fifth measure has a quarter rest, a quarter note G2, a quarter note F2, and a quarter rest. A double bar line with a repeat sign is at the end of the staff, with a '1.' above it and a '2.' above it.

C chords

Solos, then DS
end on C

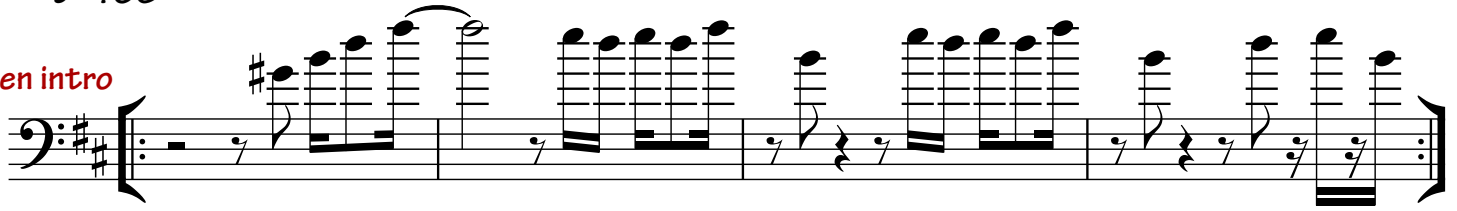
Musical staff for Trombone 2, chords section. The staff is in bass clef with a key signature of one flat (Bb). It contains four measures of music. The first measure has a quarter note G2, a quarter note F2, and a quarter rest. The second measure has a quarter rest, a quarter note G2, a quarter note F2, and a quarter rest. The third measure has a quarter rest, a quarter note G2, a quarter note F2, and a quarter rest. The fourth measure has a quarter rest, a quarter note G2, a quarter note F2, and a quarter rest. A double bar line with a repeat sign is at the end of the staff.

Baritone Saxophone

CLAMOUR BANGER

♩=108

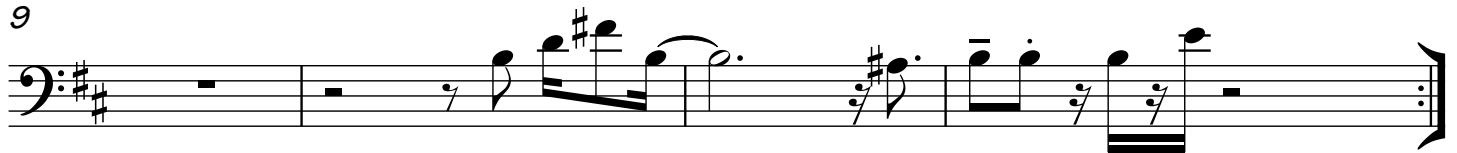
open intro



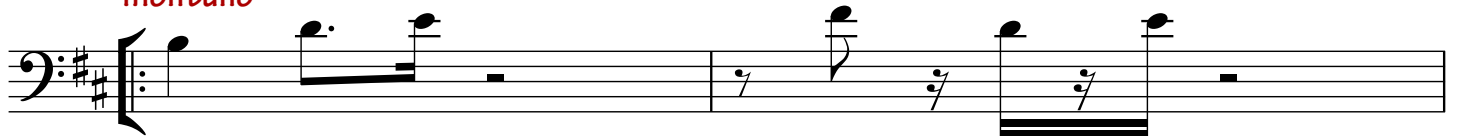
A trumpet melody



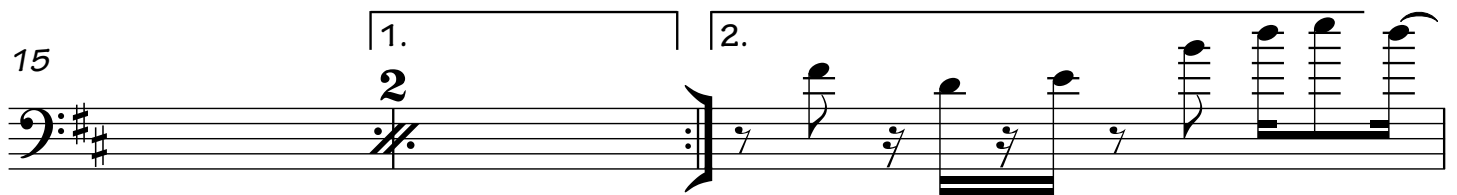
9



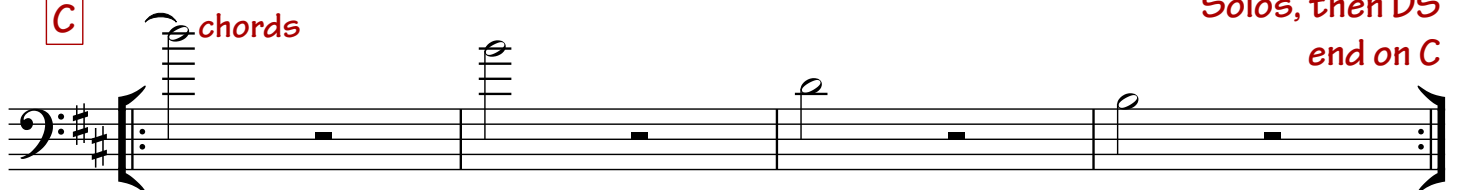
B montuno



15



C chords



Solos, then DS
end on C

CLAMOUR BANGER

Tuba

♩=108

open intro

Musical notation for the open intro section, measures 1-4. The staff is in bass clef with a key signature of one flat. Measure 1 contains a quarter note G2, a quarter note A2, and a quarter note B2. Measure 2 contains a quarter rest, a quarter note G2, and a quarter note F2. Measure 3 contains a quarter note G2, a quarter note A2, and a quarter note B2. Measure 4 contains a quarter note G2, a quarter note A2, and a quarter note B2. A double bar line with a repeat sign is at the end of measure 4, with a '2' above it.

A trumpet melody

Musical notation for section A, measures 5-6. The staff is in bass clef with a key signature of one flat. Measure 5 contains a quarter note G2, a quarter note A2, and a quarter note B2. Measure 6 contains a quarter note G2, a quarter note A2, and a quarter note B2. A double bar line with a repeat sign is at the end of measure 6, with a '2' above it.

Musical notation for section A, measures 7-8. The staff is in bass clef with a key signature of one flat. Measure 7 contains a quarter note G2, a quarter note A2, and a quarter note B2. Measure 8 contains a quarter note G2, a quarter note A2, and a quarter note B2. A double bar line with a repeat sign is at the end of measure 8, with a '2' above it.

B montuno

Musical notation for section B, measures 9-10. The staff is in bass clef with a key signature of one flat. Measure 9 contains a quarter note G2, a quarter note A2, and a quarter note B2. Measure 10 contains a quarter note G2, a quarter note A2, and a quarter note B2. A double bar line with a repeat sign is at the end of measure 10, with a '2' above it.

15

Musical notation for section C, measures 11-14. The staff is in bass clef with a key signature of one flat. Measure 11 contains a quarter note G2, a quarter note A2, and a quarter note B2. Measure 12 contains a quarter rest, a quarter note G2, and a quarter note F2. Measure 13 contains a quarter note G2, a quarter note A2, and a quarter note B2. Measure 14 contains a quarter note G2, a quarter note A2, and a quarter note B2. A first ending bracket covers measures 13 and 14, with a '1.' above it. A second ending bracket covers measures 13 and 14, with a '2.' above it.

C chords

Solos, then DS
end on C

Musical notation for section C, measures 15-16. The staff is in bass clef with a key signature of one flat. Measure 15 contains a quarter note G2, a quarter note A2, and a quarter note B2. Measure 16 contains a quarter note G2, a quarter note A2, and a quarter note B2. A double bar line with a repeat sign is at the end of measure 16, with a '2' above it.